



MAGNETIC LIMESTONE SCALE NEUTRALIZER

NATURAL HARDNESS OF WATER:

Groundwater contains various mine mineral substances. The most common are calcium and magnesium; we refer to such water as "hard".

Hard water contains various amounts of free radicals of calcium and magnesium (hard salts).

Water hardness is measured according hardness scales (German or French). A German hardness unit corresponds to 28 mg of calcium oxide or 24 mg of magnesium oxide per liter of water, or the milliliter equivalent per liter of water.

CONSEQUENCES OF SCALE BUILDUP:

Accumulation of limestone scale on pipe walls, in reservoirs and in heaters causes increased costs due to damage to plumbing systems. It also substantially increases heating costs. Energy consumption also increases proportionally to the thickness of the scale layer, as can be seen from the diagram. In addition, scale buildup leads to difficulties in technological processes in industry.

PREVENTION OF SCALE BUILDUP:

We have conducted thorough research to determine how to avoid the high costs and problems which appear due to scale buildup. On the basis of lengthy and costly testing we have developed a device which will satisfy all customers: the MAGNETIC LIMESTONE SCALE NEUTRALIZER.

RESULTS:

- ◆ 70% reduction of scale buildup without the use of chemical agents
- ◆ Removal of limestone scale without energy expenditure
- ◆ Non-polluting, small size
- ◆ Easy to install

OPERATION:

When the water passes through the magnetic field, the crystalline structure of the hard particles is changed such that water molecules begin to attach themselves to them. The attached particles carry the water with them through the pipes and the entire plumbing system.

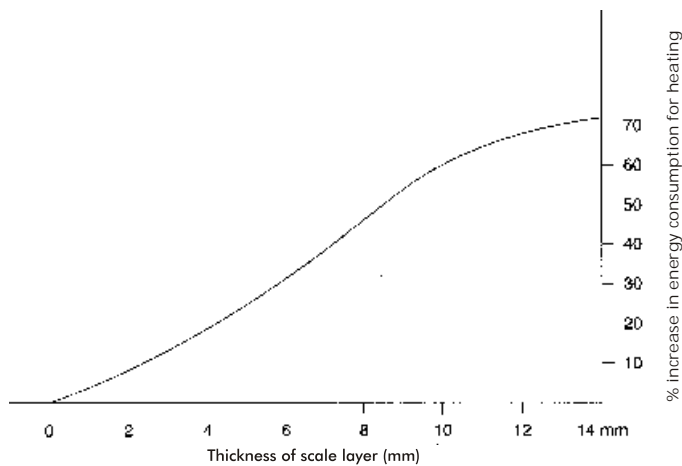
Under pressure in a closed system or space, these particles are separated (argonite).

The magnetic effect lasts from 29-48 hours.

Excellent results have been achieved with the Magnetic Limestone Scale Neutralizer over a wide range of applications.

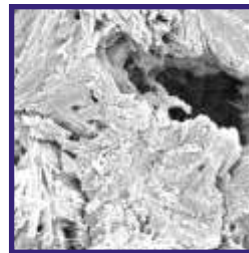
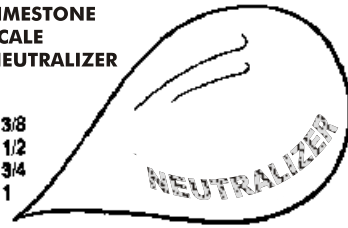
We recommend that a mechanical filter be installed behind the neutralizer.

Increased energy consumption for heating water with respect to the thickness of limestone scale in heating systems

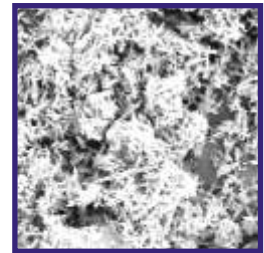


MAGNETIC
LIMESTONE
SCALE
NEUTRALIZER

R 3/8
R 1/2
R 3/4
R 1



Without application neutralizer



With applicatin neutralizer

SINTRED metallic magnets

MAGNET CODE No DIN STANDARD

MAGNET 10.12 DIN 1710

ANISO

Table of water flow through the magnetic neutralizer

MODEL	R	L	L ₁	d	Q (m ³ /h)
N ₁	3/8	134	17	28	0,60
N ₂	1/2	134	17	28	0,78
N ₃	3/4	146	18	32	1,50
N ₄	1	155	23	45	2,8
N ₅	5/4	170	25	55	4,6
N ₆	6/4	170	25	60	8,5
N ₇	2	170	25	80	11,5
N ₈	2 1/2	190	30	90	24
N ₉	3	190	30	105	44



R = size including threads

L = total length

L₁ = thread length

φd = outside diameter

Q = flow in m³/h

Tested at ZRMK Ljubljana, no. DN 5/533-204/123/91



Industrijska 5, 1290 Grosuplje -SLO, telefon: +386 1 786 47 55, 786 10 81, fax: +386 1 786 47 54

GSM: +386 41 627 719, E-mail: ekom@siol.net